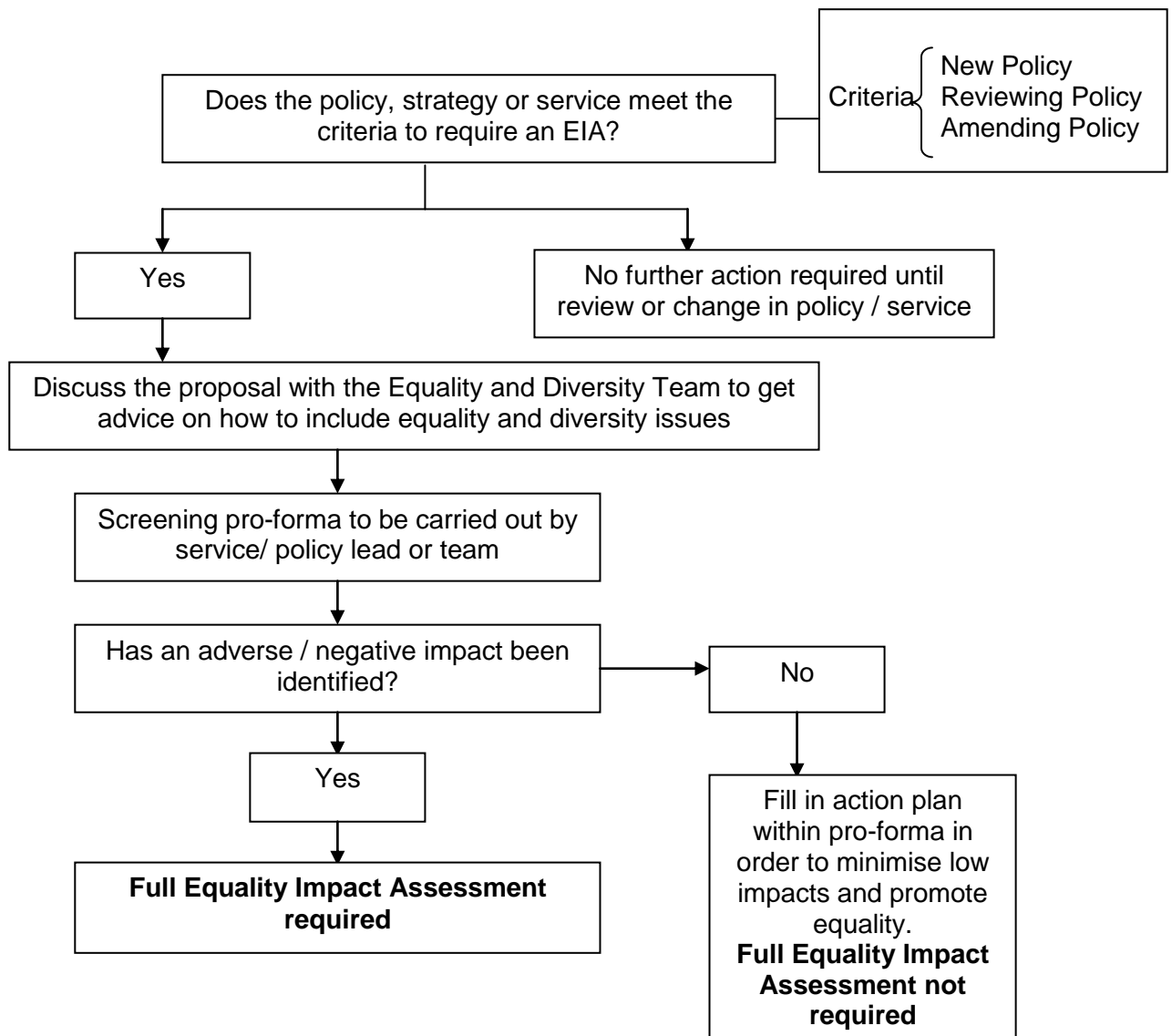


Wolverhampton City PCT Equality Impact Assessment Initial Screening of Policy/Strategy Pro Forma General Policies, Procedures and Functions

Equality Impact Assessment Process Chart Screening Process



N.B. If a member of staff is unsure about any stage of the EIA process then the EIA guidance handbook should be referred to or contact the Equality and Diversity Department.

If you require this document in a different format, e.g., larger print, please contact the Equality and Diversity Department on 01902 444014 or e-mail equality.diversity@wolvespct.nhs.uk

**Wolverhampton city PCT E
quality Impact Assessment
Initial Screening of Policy/Strategy Pro Forma**

Completion Guidance: Please ensure that all the questions on the pro-forma are completed and that written evidence is provided. Should you have any problems when filling out the pro-forma then please contact the Equality and Diversity Department.

* Policy includes; strategies, procedures, functions, guidance and guidelines

Name of policy *	Dental Service for Special Needs Patients
Aim of policy *	
Name of Accountable Director [TITLE]	Lynne Allen
Name of Responsible person/people [TITLE]	Tracy Harvey / Howard Finegan

Impact Assessment

Does the policy* target or exclude a particular equality target groups listed? Please delete YES / NO as appropriate	Ethnicity		NO	Please provide an explanation for your answer below and evidence as appropriate
	Disability	YES		
	Gender		NO	
	Age		NO	
	Sexual Orientation		NO	
	Transgender		NO	
	Religion or Belief		NO	
Disability – the service will maintain the current provision of services to special needs patients and seek to reach out to others in hard to reach groups.				

Does the policy* affect any of the equality target groups listed disproportionately?	Ethnicity		NO	Please provide evidence for your answer below
	Disability	Yes		
	Gender		NO	
	Age		NO	
	Sexual Orientation		NO	

	Transgender		NO
	Religion or Belief		NO

Disability – as above. The current provision sees only a small number of special needs patients, the new service will seek out more patients.

Are there barriers which could inhibit access to the benefits of the policy*? e.g. Communication/information, physical access, location, sensitivity etc.	DDA Access, communication etc will all be fully considered during the tendering process – compliance with national legislation and local guidelines will be built into the procurement process and will be continuously monitored through the contract monitoring arrangements going forward.	Please provide evidence for your answer
--	---	---

Does the policy* give different groups the same choices as everybody else?	The new service will provide a range of dental services to those who would not otherwise receive dental treatment as a consequence of physical or sensory impairment. The service will therefore provide the same levels of oral health services to these groups.	Please provide evidence for your answer
---	---	---

What evidence has been used to make these judgements? Please tick one or more in column 3	Demographic data and other statistics, including census findings	y	Please provide any evidence that you feel may be appropriate
	Recent research findings including studies of deprivation		
	Results of recent consultations and surveys		
	Results of ethnic monitoring data and any equalities data from the local authority / joint services		
	Information from groups and agencies within Wolverhampton		
	Comparisons between similar functions / policies		
	Analysis of PALS, complaints and public enquires information		
	Analysis of audit reports and reviews	y	

The project was initiated through the QiPP Programme and resulted in a comprehensive value for money review. Data and information from many sources formed part of the review and analysis.

<p>How is the effect of the policy* on different equality target groups going to be monitored?</p> <p>Please specify for each equality group</p>	Ethnicity		<p>Please provide evidence for your answer</p>
	Disability	The new service will be managed and monitored through the vehicle of a PDS contract – the contract will specifically require data relating to referrals through the service to be provided to the Commissioner on a regular basis. This data will be used in conjunction with national and local statistics to ensure that the service continues to remain viable throughout the contract.	
	Gender		
	Age		
	Transgender		
	Sexual Orientation		
	Religion or Belief		

Impact	Group	Level of Impact	✓	Evidence
What level of impact will this policy* have? Please tick one or more in column 4	Ethnicity			Please provide evidence for your answer
	Disability	Low level - Impact can be rectified by small actions being taken		
		High level / Adverse Impact – Impact cannot be rectified without significant changes to the policy or strategy	✓	
	Gender			
	Age			
	Sexual Orientation			
	Transgender			
	Religion or Belief			
There is an identified unmet need which will be targeted by the new service, resulting in a high level positive impact.				

Actions

Please give details of the actions you will take to address the issues highlighted in this assessment and when you will complete them by (all these actions should be incorporated into you **Equality Scheme Action Plans**)

Equality Target Group	Action	Lead Person	Timescale
Disability	Contract Monitoring and feedback from complaints, PALS and other PPE sources	Tracy Harvey	Ongoing – commencing October 2012
	Key Performance Indicators are built into the contract which will ensure ongoing improvements to the service.		

Additional Information

Please put in an additional information that you think may be relevant to the Equality Impact Assessment

Please send the completed template to Equality and Diversity Department, equality.diversity@wolvespct.nhs.uk tel 01902 444014, address; Wolverhampton City PCT, West Park Hospital, 10H Tettenhall Road, Wolverhampton. WV1 4SA.