

Improving Services for Local People



A four-page special on Wolverhampton City Primary Care Trust's plans for three additional GP practices and a GP-led health centre

Extra GPs and health services will tackle ill health

Patients across the West Midlands are to benefit from new investment – bringing additional GPs and a wider range of health services in areas of greatest need.

Health services across the region have been awarded £25 million to set up 22 new GP practices in areas with the fewest doctors plus a health centre in each of the 17 primary care trust (PCT) areas.

The new practices and health centres will provide extra GPs in those areas that need them most, and offer a range of services plus extended opening hours.

For Wolverhampton this means **THREE** extra GP practices and **ONE** GP-led health centre.

GPs, groups of GPs and local and national primary care companies have bid to provide these services in Wolverhampton – and work has already begun to select the best bidders.

This supplement details Wolverhampton City Primary Care Trust's plans for this exciting initiative which will improve local people's access to GPs and healthcare services.



New GPs and health services opening April 2009

GP-led Health Centre including Walk-in Service

The GP-led health centre will have:

- GP services
- pre-bookable GP appointments
- walk-in service for minor injuries and ailments
- opening times from 8am to 8pm seven days a week
- healthcare both for people registered at the GP practice and those who are not registered.

Wolverhampton City Primary Care Trust involved local people in drawing up standards to assess the areas of the city with the greatest need for these extra GP services.

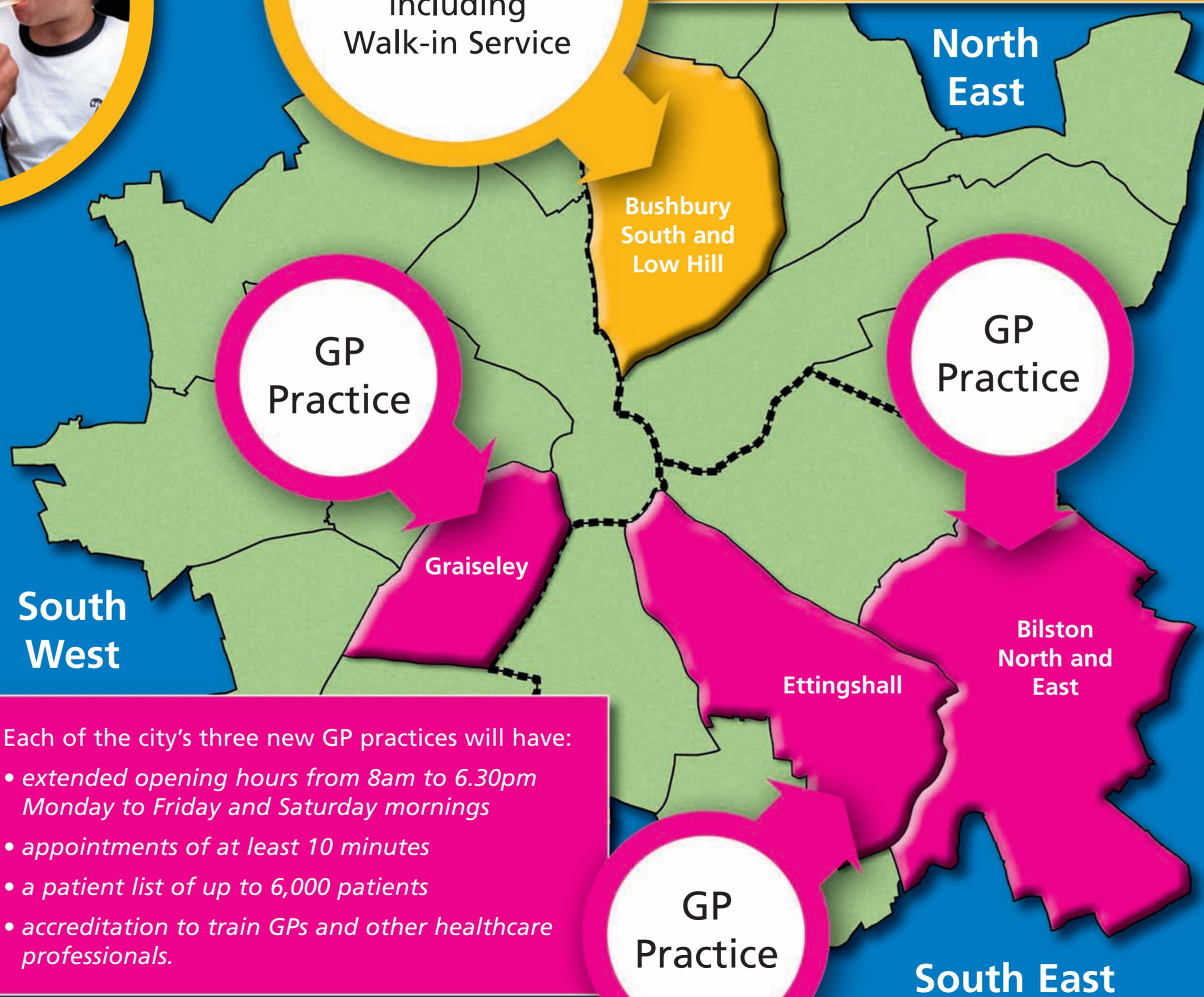
These standards were:

- shortage of GPs
- limited choice of GPs in the area
- GPs with small or restricted catchment areas
- limited range of services provided by GPs
- patient feedback on access to GP services
- high use of A&E at New Cross Hospital, the GP out-of-hours service and the walk-in service at the Phoenix Health Centre
- public transport links to health services
- communities with a high demand for health services
- health inequalities
- number of babies and children under the age of 15
- number of over 75-year-olds
- number of people from minority ethnic communities
- planned housing developments
- social and economic deprivation
- number of nursing and residential care homes.

The areas found to have greatest need of additional GP services are: Graiseley, Ettingshall, Bilston and Bushbury South/Low Hill.

Sites will now be found where these services could be based for up to five years.

In the long-term, the services will be incorporated into new health and social care developments planned for the city.



- Each of the city's three new GP practices will have:
- extended opening hours from 8am to 6.30pm Monday to Friday and Saturday mornings
 - appointments of at least 10 minutes
 - a patient list of up to 6,000 patients
 - accreditation to train GPs and other healthcare professionals.

Next steps

GPs, groups of GPs or local and national primary care companies have bid to provide these services in Wolverhampton.

Wolverhampton City Primary Care Trust shortlisted 15 developers to present their plans in September and the successful bids will be awarded in December.

All services will be open from April 2009.

Find out more by

- logging on to – www.wolvespct.nhs.uk
- calling the project office – 01902 441792
- going to your local health panel meeting:

SOUTH EAST LOCALITY (covers Bilston, Blakenhall, East Park, Ettingshall and Spring Vale). Thursday, October 9 at 6pm at East Park Methodist Centre, Brooklands Parade.

SOUTH WEST LOCALITY (covers Graiseley, Merry Hill, Park, Penn, St Peter's, Tettenhall and Wightwick). Wednesday, October 15 at 6pm at The Beeches, Penn Hospital, Penn Road.

NORTH EAST LOCALITY (covers Bushbury, Fallings Park, Heath Town, Low Hill, Oxley and Wednesfield). Wednesday, October 22 at 6pm at the Neil Dougherty Centre, Macefield Road, The Scotlands.

If you wish to have a part of this publication read to you in your preferred language please contact SWIIS on 0121 633 5710

ਜੇਕਰ ਤੁਸੀਂ ਚਾਹੁੰਦੇ ਹੋ ਕਿ ਇਸ ਛੱਪੀ ਹੋਈ ਰਿਪੋਰਟ ਦਾ ਕੋਈ ਹਿਸਾ ਤੁਹਾਨੂੰ ਤੁਹਾਡੀ ਚੁਣੀ ਹੋਈ ਭਾਸ਼ਾ ਵਿੱਚ ਪੜ੍ਹਕੇ ਸੁਣਾਇਆ ਜਾਵੇ, ਤਾਂ ਕਿਰਪਾ ਕਰਕੇ ਸਵਿਸ (SWIIS) ਨੂੰ 0121 633 5710 'ਤੇ ਸੰਪਰਕ ਕਰੋ।

اگر آپ اس پبلیکیشن کے کسی بھی حصے کو اپنی پسند کی زبان میں پڑھوا کر سننا چاہتے ہیں تو براہ مہربانی سوس سے 0121 633 5710 پر رابطہ کریں

तमने आनां डोए पए भाग तमे समञ्ज शङ्को येवी भाषामां सांभलवा होय तो स्विसने आ नंभर पर 0121 633 5710 पर ड़ोन करे

اگر علاقہ مند ہستید کہ قسمتی از این نشریہ بہ زبان مورد علاقہ شما برایتان خواندہ شود لطفاً با دفتر سونیس (SWIIS) بہ شمارہ 0121 633 5710 تماس حاصل نمائید۔

अगर आप चाहते हैं कि इस प्रकाशन के विवरण के किसी भी भाग को आपको अपने पसंद की भाषा में पढकर सुनाया जाए तो कृपया स्विस (SWIIS) से 0121 633 5710 पर सपर्क कीजिए



Questionnaire

We want to know your views, what you want to see provided in the new facilities and what improvements would help you. Your feedback is important to us.

Please fill in the attached questionnaire and return it, Freepost, to the address shown below. You can also complete the questionnaire on-line at www.wolvespct.nhs.uk/Services/CustomerService_FORMS/yourViewsonEAPMC.asp

Q1: What services do you feel are most needed in the new GP practices/GP-led health centre?

.....

Q2: Do you have any comments about the locations chosen?

.....

Q3: Do you have any comments on these plans to provide new services and facilities?

.....

Q4: Do you have other comments about GP services provided in your area?

.....

Q5: Would you like to be involved in giving feedback to us about these developments?

Yes No *If yes, please give your contact details below.*

Q6: Would you like to be kept informed of progress on these developments?

Yes No *If yes, please give your contact details below.*

Name:

Address:

.....

Tel no:

Email:

Return your completed questionnaire to:

Customer Service Manager
 Wolverhampton City Primary Care Trust
 FREEPOST 30389
 Wolverhampton
 WV3 7BR

You do not need to use a stamp